

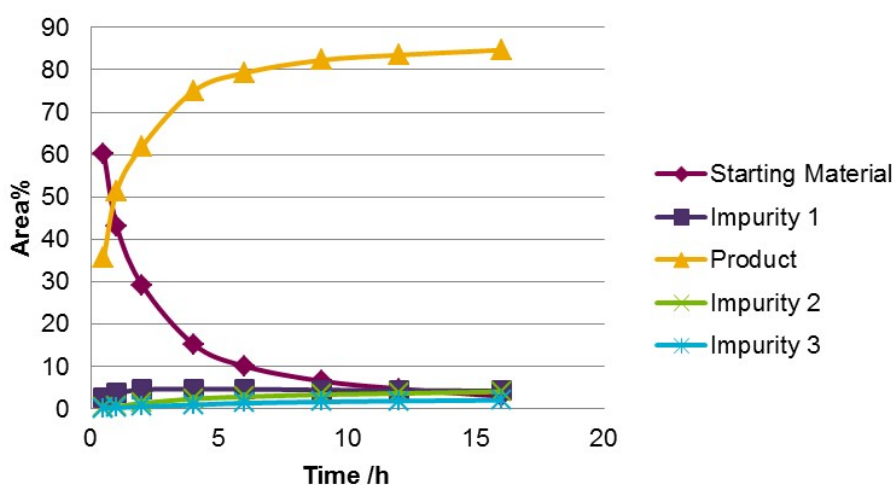
Amigo produces process optima for direct scale up to production

Since the mid-1990s, 4 - 25ml test tube type reactors have been extensively employed across Pharma to provide process optima for scale-up. The Amigo Workstation runs 10 such reactors in parallel to accelerate process understanding whilst conserving starting material.

This case study shows how FED experiments can be used to further accelerate process optimization using Amigo.

Optimisation of a biphasic reaction

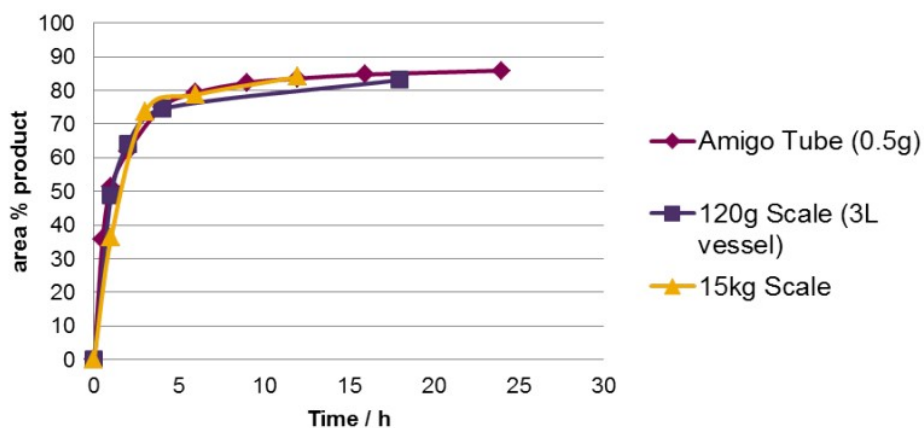
Reaction Profile from Optimal Reaction from a FED



- The organic layer ONLY was sampled / analysed

30,000 fold Scale up

Comparison of biphasic reaction



- Identical results observed confirming linear scale-up